

SONY

Press Release

Sony introduces the FX2 compact camera, expanding Cinema Line's versatility for creatives

The new FX2 has the look and operability of Cinema Line cameras with the ability to shoot high resolution photos and comes equipped with an articulating eyepiece

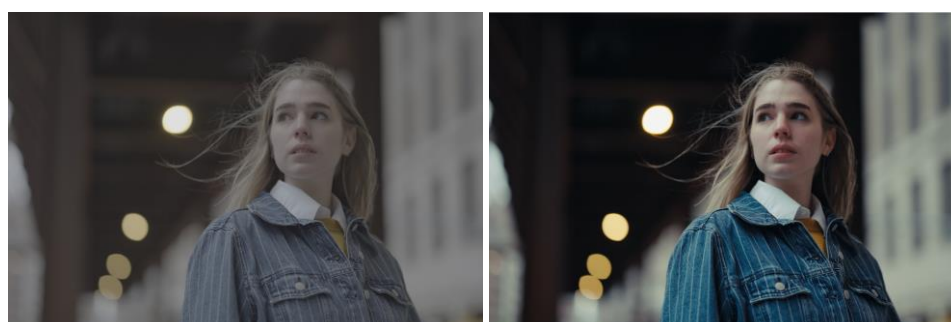


FX2

Hong Kong, May 29, 2025 – Sony is proud to announce today the latest addition to its established Cinema Line family, the [FX2](#) (model ILME-FX2). The FX2 will offer a seamless entry point into the broader Cinema Line range, giving greater cinematic expression to independent creators, or crews needing a versatile camera.

"The FX2 was created based on user feedback and is engineered with unique features to support filmmaking, a new eyepiece and improved usability for versatile production needs. The FX2 is intended to continue the Cinema Line's goal of preserving authentic emotion in every shot and empower creators across all areas of content production," says Kanta Yamamoto, Director of Digital Imaging Division, Entertainment, Technology & Services Business Group, Sony Electronics (Singapore).

FX2 Features: Full-frame Filmmaking and Stills capabilities



Slog

Graded

The FX2 comes with a full frame sensor that delivers stunning imagery and beautiful bokeh effects, like many other Cinema Line cameras. The new camera is equipped with a 33.0 effective megapixel¹ back-illuminated Exmor R™ sensor, and with up to 15+ stops of wide latitude using S-Log3, it captures impressive detail in both highlights and shadows.

The camera is equipped with Dual Base ISO for S-Log 3 of 800 and 4000, enabling optimal image quality across varied lighting conditions. The FX2 ISO sensitivity for video can be expanded up to 102400, making it ideal for low-light environments. The camera also supports multiple recording formats for flexible post-production workflows and records in 4:2:2 10-bit All-Intra and supports formats like XAVC S-I DCI 4K at 24.00p, among others.



The FX2 benefits from an extended shooting capability, with up to 13 hours of continuous recording in 4K 60p², thanks to its internal cooling fan and effective heat dissipation structure. The FX2 also offers variable frame rate settings, allowing up to 60 fps in 4K (for a maximum 2.5x slow-motion effect) and up to 120 fps in Full HD (for up to 5x slow motion). It supports Log shooting in Cine EI, Cine EI Quick, and Flexible ISO modes, offering versatile workflows for different production needs. To further the cinematic expression of the camera, creatives can import up to 16 user LUTs for on-camera preview for video, enabling precise colour monitoring on set.

Filmmakers can also easily and quickly create in-camera cinematic looks, with S-Cinetone™ set as the default, along with a range of Picture Profile and Creative Look presets. A desqueeze display function is available, supporting both 1.3x and 2.0x anamorphic lenses for accurate framing.

Improved usability for comfortable solo operation

The FX2 features the same compact, flat-top design as Sony's Cinema Line FX3 and FX30 cameras, ensuring familiarity and compatibility across setups. Built-in mounting points (UNC 1/4-20 x3) support a cageless configuration and ability to mount on a tripod, offering greater flexibility for rigging. A top handle (model XLR-H1) enhances mobility and control, especially during handheld or dynamic shooting. Its lightweight, portable build—measuring 129.7 x 77.8 x 103.7 mm (W × H × D) and weighing around 679 grams —makes it ideal for solo operators or small crew productions.



The camera offers advanced focus features designed for precision and creativity. Its new Real-time Recognition AF delivers fast and reliable performance, with improved accuracy for human subjects, although its intelligent subject recognition extends to animals, birds, vehicles, and insects, with an Auto mode available for effortless detection. For even more control, the camera includes tools like focus breathing compensation, AF Assist, and customizable autofocus transition speed and sensitivity, giving creators the flexibility to fine-tune focus for expressive, cinematic imagery.

The camera comes with Active Mode and Dynamic active Mode, new to Cinema Line. Both modes are designed to ensure smooth and steady handheld shooting.



The FX2 Auto Framing feature automatically crops and tracks a subject to keep them in a prominent position when the camera is mounted on a tripod, producing footage that looks like it was shot by an experienced operator. The Framing Stabilizer function automatically keeps the subject in the same position within the frame, which can be useful, for example, when the camera operator is moving alongside the subject.

From a still image perspective, the camera features an additional log shooting option with a newly added 'Log shooting' menu. This feature allows creators to shoot high-resolution 33MP stills, optimized for colour grading in post-production³. The FX2 also offers smooth operation with a MOVIE/STILL mode lever, allowing for a quick switchover between still and movie shooting. Depending on the selected mode, the displayed menu items will automatically adjust. Additionally, mode selection is made easy with a long press of the Fn button, which recalls and changes the shooting mode.

FX2 Features: Improved but familiar hardware inherited from Sony's cinema cameras

For enhanced immersion while the user is shooting, the camera features a new high-resolution 3.68-million-dot tiltable EVF⁴, which comes with a viewing angle optimised for video production and comes bundled with a deep eye piece. It also includes a vari-angle 3.0-type touchscreen LCD for easy framing from any position. The controls are intuitively placed on the top panel and around the grip, with tally lamps for recording indication. A customizable "BIG6" (home) screen displays frequently used parameters such as FPS, ISO, shutter speed (angle/speed), Look presets, white balance, iris or ND filter status. In response for the growing amount of content shot in vertical 16: 9 for social media platform purposes, the FX2 also has vertical information displayed while shooting. Additionally, when mounted with the XLR-H1 unit, the system provides two XLR/TRS combo inputs and a 3.5mm stereo mini jack, enabling professional 4-channel, 24-bit digital audio input.



The camera offers extensive expandability and connectivity options, including an HDMI Type-A terminal capable of outputting up to 4K 60p 4:2:2 10-bit video and 16-bit RAW⁵ for high-end recording and monitoring. For seamless data transfer and remote control, it supports dual-band Wi-Fi (2.4 GHz and 5 GHz⁶) as well as wired LAN via a compatible adapter⁷. Additionally, the USB Type-C® port enables SuperSpeed USB 10Gbps data transfers and supports USB Power Delivery (PD), while built-in USB and network streaming support enables live broadcasting and remote production workflows⁸.

Social responsibility

Aligned with Sony's ambitious 'Road to Zero' initiative, this product supports the company's vision for achieving a zero environmental footprint by 2050. The manufacturing process reflects this commitment through facilities powered entirely by renewable energy sources⁹.

The camera system incorporates comprehensive accessibility options including a Screen Reader function¹⁰ and Display Magnification to support visually impaired users across an expanded range of menu items. Additional intuitive controls enhance usability for all shooters, featuring:

- Real-time recognition autofocus that reduces manual adjustments
- Streamlined touch interface operations for direct menu navigation
- Tactile button design with clear differentiation

These inclusive design elements ensure professional imaging tools remain accessible to creators of all abilities while maintaining full operational capability

Availability

The FX2 will be available from 18 July 2025, with body only for HK\$22,990.

Order Now

From 29 May to 12 June 2025, the **FX2** is available for pre-order at all Sony Stores, Sony Store online (www.sony.com.hk/store) and Sony sales hotline at (852) 2833-5129 as well as authorized dealers. Customers ordering will enjoy the following special offers:

Model	Retail Price	Premium	Special Offers
FX2 (Body Only)	HK\$22,990	<ul style="list-style-type: none"> • BC-ZD1 Battery Charger (worth HK\$890) 	<ul style="list-style-type: none"> • Extra HK\$6,690 for SELP1635G lens (original price HK\$10,490) • Extra HK\$8,290 for SEL50F14GM lens (original price HK\$10,990)

For the product announcement video on the new FX2, please visit [here](#).

For the full product video, please visit [here](#).

For detailed product information, please visit [here](#).

For more information about Cinema Line, please go to www.sonymovie.com.

For customer enquiries, please contact Sony hotline service at (852) 2833-5129.

About Hong Kong Marketing Company

Hong Kong Marketing Company (HKMC), a division of Sony Corporation of Hong Kong Limited, provides sales, marketing and after sales services for Sony's consumer electronics products as well as broadcast and professional products in Hong Kong and Macau. For more information on Sony's products and services, please visit our website at <http://www.sony.com.hk>.

¹ For stills. Max 27.6 megapixels for movie

² Sony internal tests. USB power supply, XAVC S-I (All-I), 4K 60p 10-bit 4:2:2, 25 degrees C⁰ (ambient, camera when recording started), Auto power off temperature: High, Cooling fan: Auto. The duration will vary depending on the shooting conditions. The maximum continuous recording time for a single movie shooting session is approximately 13 hours (a product specification limit)

³ Blackmagic Design's DaVinci Resolve will support this model's still RAW format (Sony ARW) this year.

⁴ adjustable from 0° to +90° for flexible shooting angles. Mounted Multi Interface (MI) Shoe accessories may interfere with EVF tilt. Visit Sony's support web page for compatibility information

⁵ The output image will be in the APS-C size /Super 35mm equivalent angle of view.

⁶ The 5 GHz band may not be available in some countries or region

⁷ A commercially available USB-LAN adapter is required.

⁸ A USB PD compatible external power supply device with 9V/3A or higher output capacity and a USB Type-C cable that can handle 3A or more is required

⁹ Further reducing environmental impact, the product utilizes recycled packaging materials that minimize plastic content without compromising protection. These sustainable practices demonstrate our dedication to eco-conscious production while maintaining the highest quality standards.

¹⁰ Download of compatible language file may be necessary. Please refer to the Help Guide for details.